

TECHNICAL MANUAL

ORGANIZATIONAL, DIRECT SUPPORT, AND GENERAL SUPPORT MAINTENANCE

REPAIR PARTS AND SPECIAL TOOLS LISTS

(INCLUDING DEPOT MAINTENANCE REPAIR PARTS AND SPECIAL TOOLS)

FOR

OPERATION CENTER COMMUNICATIONS AN/MSC-31A

(NSN 5895-00-999-2629)

HEADQUARTERS, DEPARTMENT OF THE ARMY
JULY 1977

TECHNICAL MANUAL
 No. 11-5895-463-24P

HEADQUARTERS
 DEPARTMENT OF THE ARMY
 WASHINGTON, DC, 28 July 1977

**ORGANIZATIONAL, DIRECT SUPPORT, AND GENERAL SUPPORT MAINTENANCE
 REPAIR PARTS AND SPECIAL TOOLS LISTS
 [INCLUDING DEPOT MAINTENANCE REPAIR PARTS AND SPECIAL TOOLS]
 FOR
 OPERATION CENTER COMMUNICATIONS AN/MSC-31A
 (NSN 5895-00-999-2629)
 Current as of 11 March 1977**

REPORTING OF ERRORS

You can improve this manual by recommending improvements using DA Form 2028-2 (Test) located in the back of the manual. Simply tear out the self-addressed form, fill it out as shown on the sample, fold it where shown, and drop it in the mail.

If there are no blank DA Forms 2028-2 (Test) in the back of your manual, use the standard DA Form 2028 (Recommended Changes to Publications and Blank Forms) and forward to the Commander, US Army Electronics Command, ATTN: DRSEL-MA-Q, Fort Monmouth, NJ 07703.

In either case, a reply will be furnished direct to you.

Table of Contents

	Page	Illus. Figure
SECTION I. INTRODUCTION -----	1	
II. Repair parts list -----	5	
GROUP 00 Operation Center Communications AN/MSC-31A _____	5	1
01 Shelter, Electrical Equipment S-371/MSC-31A _____	7	2-7
0101 Air conditioner (See TM 5-4120-282-13 for parts)	18	8
0102 Blower, exhaust _____	21	9
0103 Heater _____		
02 Intercommunication Station LS-147C/FI (See TM 11-5830-221-24P for parts)		
03 Switchboard, Telephone, Manual SB-22/PT (See TM 11-5805-262-20P and TM 11-5805-262-35P for parts)		
04 Telephone Set TA-312/PT (See TM11-5805-201-20P and TM11-5805-201-34P for parts)		
05 Loudspeaker, Permanent Magnet LSA54/U (See TM 11-5965-255-14P for parts)		
06 Headset-Handset H-144/U (See TM11-5965-206-14P for parts)		
07 Receiver, Radio R-392/URR (See TM 11-5820-334-20P and TM 11-5820-334-34P for parts)		
08 Radio Set AN/VRC-47 (See TM11-5820-401-12 and TM11-5820-401-35 for parts)		
09 Power Supply PP-2953/U (See TM 11-6130-233-12 and TM 11-6130-233-35 for parts)		
SECTION III. Special tools list (Nonapplicable)		
IV. National stock number and part number index _____	22	

* This manual supersedes so much of TM 11-5895463-15, 29 April 1968, including Change 1, 7 October 1969, as pertains to repair parts and Special tools list.

SECTION I

INTRODUCTION

1. Scope

This manual lists spares and repair parts; special tools; special test, measurement, and diagnostic equipment (TMDE), and other special support equipment required for performance of direct support, and general support maintenance of the AN/MS-31A. It authorizes the requisitioning and issue of spares and repair parts as indicated by the source and maintenance codes.

2. General

This Repair Parts and Special Tools List is divided into the following sections:

a. Section II. Repair Parts List. A list of spares and repair parts authorized for use in the performance of maintenance. The list also includes parts which must be removed for replacement of the authorized parts. Parts lists are composed of functional groups in numeric sequence, with the parts in each group listed in figure and item number sequence.

b. Section III. Special Tools List. Not applicable.

c. Section IV. National Stock Number and Part Number Index. A list, in National item identification number (NIIN) sequence, of all National stock numbers (NSN) appearing in the listings, followed by a list, in alphameric sequence, of all part numbers appearing in the listings. National stock numbers and part numbers are cross-referenced to each illustration figure and item number appearance.

3. Explanation of Columns

a. Illustration. This column is divided as follows:

(1) *Figure number.* Indicates the figure number of the illustration on which the item is shown.

(2) *item number.* The number used to identify item called out in the illustration.

b. Source, Maintenance, and Recoverability (SMR) Codes.

(1) *Source code.* Source codes indicate the manner of acquiring support items for maintenance, repair, or overhaul of end items. Source

codes are entered in the first and second positions of the Uniform SMR Code format as follows:

<i>Code</i>	<i>Definition</i>
PA	Item procured and stocked for anticipated or known usage.
XD	A support item that is not stocked. When required, item will be procured through normal supply channels.

NOTE

Cannibalization or salvage may be used as a source of supply for any items source coded above except those coded XA and aircraft support items as restricted by AR 700-42.

(2) *Maintenance code.* Maintenance codes are assigned to indicate the levels of maintenance authorized to USE and REPAIR support items. The maintenance codes are entered in the third and fourth positions of the Uniform SMR Code format as follows:

(a) The maintenance code entered in the third position will indicate the lowest maintenance level authorized to remove, replace, and use the support item. The maintenance code entered in the third position will indicate one of the following levels of maintenance:

<i>Code</i>	<i>Application/Explanation</i>
O	Support item is removed, replaced, used at the organizational level.
F	Support item is removed, replaced, used at the direct support level.
H	Support item is removed, replaced, used at the general support level.

(b) The maintenance code entered in the fourth position indicates whether the item is to be repaired and identifies the lowest maintenance level with the capability to perform complete repair (i.e., all authorized maintenance functions). This position will contain one of the following maintenance codes:

- | <i>Code</i> | <i>Application /Explanation</i> |
|-------------|---|
| O | The lowest maintenance level capable of complete repair of the support item is the organizational level. |
| F | The lowest maintenance level capable of complete repair of the support item is the direct support level. |
| H | The lowest maintenance level capable of complete repair of the support item is the general support level. |
| Z | Nonreparable. No repair is authorized. |

(3) *Recoverability code.* Recoverability codes are assigned to support items to indicate the disposition action on unserviceable items. The recoverability code is entered in the fifth position of the Uniform SMR Code format as follows:

<i>Recoverability codes</i>	<i>Definition</i>
Z	Nonreparable item. When unserviceable, condemn and dispose at the Level indicated in position 3.
O	Reparable item. When uneconomically repairable, condemn and dispose at organizational level.
F	Reparable item. When uneconomically repairable, condemn and dispose at the direct support level.
H	Reparable item. When uneconomically repairable, condemn and dispose at the general support level.

c. National Stock Number. Indicates the National stock number assigned to the item and will be used for requisitioning purposes.

d. Part Number. Indicates the primary number used by the manufacturer (individual, company, firm, corporation, or Government activity), which controls the design and characteristics of the item by means of its engineering drawings, specifications, standards, and inspection requirements to identify an item or range of items.

NOTE

When a stock-numbered item is requisitioned, the repair part received may have a different part number than the part being replaced.

e. Federal Supply Code for Manufacturer (FSCM). The FSCM is a 5-digit numeric code listed in SB 708-42 which is used to identify the manufacturer, distributor, or Government agency, etc.

f. Description. Indicates the Federal item name and, if required, a minimum description to identify the item.

g. Unit of Measure (U/M). Indicates the standard of the basic quantity of the listed item as used in performing the actual maintenance function. This measure is expressed by a two-character alphabetical abbreviation (e.g., ea, in, pr, etc). When the unit of measure differs from the unit of issue, the lowest unit of issue that will satisfy the required units of measure will be requisitioned.

h. Quantity Incorporated in Unit. Indicates the quantity of the item used in the breakout shown on the illustration figure, which is prepared for a functional group, subfunctional group, or an assembly.

4. Special Information

The following publications pertain to the AN/MCS-31A and its components:

TM 5-4120-282-13, Air Conditioner, Floor Mounted Air Cooled, Electric Motor Driven, ¾ hp, 60 Cycle ac, Single Phase, 9000 btu/hr

TM 11-2300-351-15-5, Installation of Radio Set AN/VRC-47 Installation Unit in Truck, Utility, ¼-ton, 4X4, M151 or M151A1

TM 11-2300-352-15-4, Installation of Radio Set AN/VRC-47 Installation Unit in Truck, Cargo, ¾-ton, 4X4, M37

TM 11-2300-355-15-2, Installation of Radio Set AN/VRC-12 or AN/VRC-47 Installation Unit in Carrier, Personnel, Armored, M113 or M113A1

TM 11-2300-355-15-4, Installation of Radio Sets AN/VRC-46 and AN/VRC-47 in Carrier, Personnel, Armored M113, M113A1

TM 11-2300-360-15-1, Instructions for Installing Radio Set AN/VRC-12, AN/VRC-46, AN/VRC-47 or AN/VRC-53 and Intercommunication Set AN/VIC-1(V) Installation Units in Armored Reconnaissance Airborne Assault Vehicle XM551

TM 11-2300-361-15-2, Installation of Radio Set AN/VRC-24, for Combination Installation with Radio Sets AN, WRC-12, AN/VRC-46, AN/VRC-47, AN/VRC-53 or AN/GRC-125 and Intercommunication Set AN/VIC-1(V), in

- Tank, Combat, Full-tracked, 105-mm Gun, M60A1
- TM 11-2300-361-14-3, Installation of Radio Sets AN/VRC-12, AN/VRC-46, AN/VRC-47, AN/VRC-53 and AN/GRC-125 and Intercommunication Set AN/VIC-1(V) in Tank, Combat, Full-tracked, 105mm, Gun, M60A1
- TM 11-2300-361-15-4, Installation of Radio Set AN/VRC-12, AN/VRC-46, AN/VRC-47, AN/VRC-53 or AN/VRC-125 and Intercommunication Set AN/VIC-1(V) in Tank, Combat, Full-tracked, 105mm Gun, M60
- TM 11-2300-365-15-1, Installation of Radio Set AN/VRC-24, Installation Unit for Combination Installation with Radio Set AN/VRC-12, AN/VRC-46, AN/VRC-47, AN/VRC-53 or AN/GRC-125 in Tank, Combat, Full-tracked, 90mm Gun, M48A3
- TM 11-2300-367-15-1, Installation of Radio Set AN/VRC-46 with Radio-Receiving Set AN/GRR-5 and Intercommunication Set AN/VIC-1 (V), Installation Units in Gun, Twin 40mm, Self-propelled, M42 Series
- TM 11-2300-368-15-1, Installation of Radio Set AN/VRC-47 and Intercommunication Set AN/VIC-1 (V) in Gun, A.A. Artillery, S. P. 20mm, XM163
- TM 11-2300-369-15-1, Installation of Telephone Sets TA-312/PT and TA-1/PT with Reel Equipment CE-11 in Gun, AAA-20mm, XM167
- TM 11-2300-372-14-4, Instructions for Installing: Installation Kit, Electronic Equipment MK-1245/VRC in Truck, Cargo 1¼-ton, 6X6, M561 (Cab Mounted for Radio Set AN/VRC-12 or AN/VRC-47)
- TM 11-2300-372-14-6, Instructions for Installing: Installation Kit, Electronic Equipment MK-1253/VRC in Truck, Cargo, 1¼-ton, 6X6, M561 (Radio Set AN/VRC-47)
- TM 11-5805-201-12, Telephone Set TA-312/PT
- TM 11-5805-201-20P, Telephone Set TA-312/PT
- TM 11-5805-201-35, Telephone Set TA-312/PT
- TM 11-5805-201-34P, Telephone Set TA-312/PT
- TM 11-5805-201-35, Telephone Set TA-312/PT
- TM 11-5805-201-35, Telephone Set TA-312/PT
- TM 11-5805-262-12, Switchboards, Telephone, Manual SB-22/PT and SB-22A/PT
- TM 11-5805-262-20P, Switchboards, Telephone, Manual SB-22/PT and SB-22A/PT
- TM 11-5805-262-35, Switchboards, Telephone, Manual SB-22/PT and SB-22A/PT
- TM 11-5805-262-35P, Switchboards, Telephone, Manual SB-22/PT and SB-22A/PT
- TM 11-5820-334-10, Receiver, Radio R-392/URR
- TM 11-5820-334-20, Receiver, Radio R-392/URR
- TM 11-5820-334-20P, Receiver, Radio R-392/URR
- TM 11-5820-334-34P, Receiver, Radio R-392/URR
- TM 11-5820-334-35, Receiver, Radio R-392/URR
- TM 11-5820-401-12, Radio Sets AN/VRC-12, AN/VRC-43, AN/VRC-44, AN/VRC-45, AN/VRC-46, AN/VRC-47, AN/VRC-48, AN/VRC-54 and AN/VRC-55; Mounting MT-1029/VRC and Mounting MT-1898/VRC; Antenna AT-912/VRC; Control Frequency Selector C-2742/VRC and Control, Radio Set C-2299/VRC
- TM 11-5820-401-35, Radio Sets AN/VRC-12 and AN/VRC-43, AN/VRC-44, AN/VRC-45, AN/VRC-46, AN/VRC-47, AN/VRC-48 and AN/VRC-49
- TM 11-5830-221-12, Intercommunication Stations LS-147A/FI, LS-147B/FI, LS-147C/FI and LS-147D/FI
- TM 11-5830-221-24P, Intercommunications Station LS-147C/FI
- TM 11-5830-221-35, Intercommunication Stations LS-147A/FI, LS-147B/FI, LS-147C/FI and LS-147D/FI
- TM 11-5895-463-15, Operation Center Communications AN/MS-31A
- TM 11-5965-206-14P, Headset-Microphone H-91A/U; Handset-Headset H-144/U, H-144A/U, H-144B/U, and H-144C/U; and Headset-Microphone H-210/G
- TM 11-5965-255-14P, Loudspeaker, Permanent Magnet LS-454/U
- TM 11-6130-233-12, Power Supplies PP-2953/U, PP-2953A/U, PP-2953B/U and PP-2953C/U
- TM 11-6130-233-35, Power Supplies PP-2953/U, PP-2953A/U, PP-2953B/U and PP-2953C/U

5. How to Locate Repair Parts

a. When National stock number or part number is unknown.

(1) *First.* Using the table of contents, determine the functional group within which the item belongs. This is necessary since illustrations are prepared for functional groups and listings are divided into the same groups.

(2) *Second.* Find the illustration covering the functional group to which the item belongs.

(3) *Third.* Identify the item on the illustration and note the illustration figure and item number of the item.

(4) *Fourth.* Using the Repair Parts Listing,

find the figure and item number noted on the illustration.

b. When National stock number or part number is known.

(1) *First.* Using the Index of National Stock Numbers and Part Numbers, find the pertinent National stock number or part number. This index is in NIIN sequence followed by a list of part numbers in alphameric sequence, cross-referenced to the illustration figure number and item number.

(2) *Second.* After finding the figure and item number, locate the figure and item number in the repair parts list.

6. Abbreviations

Not applicable.

(Next printed page is 5)

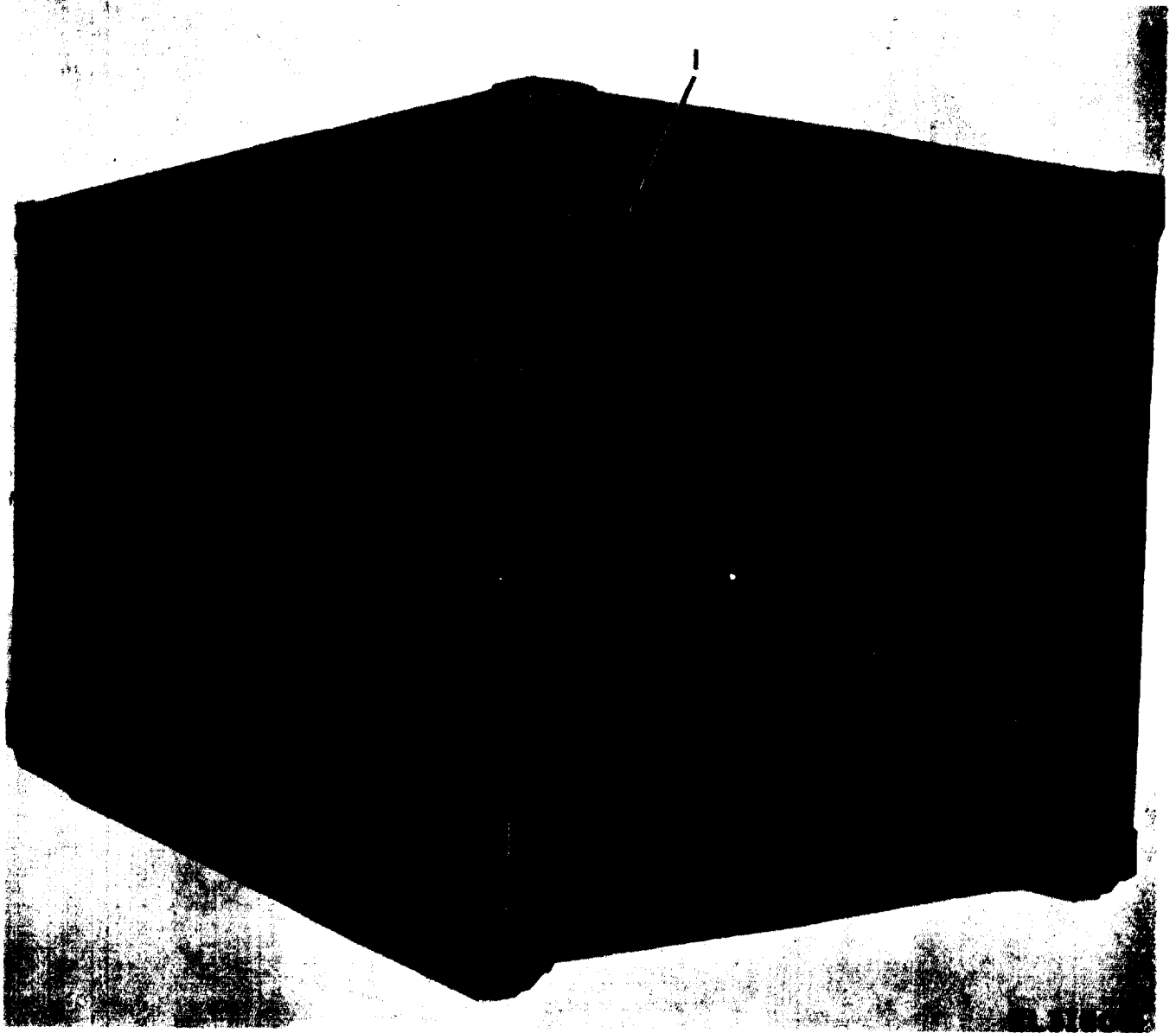
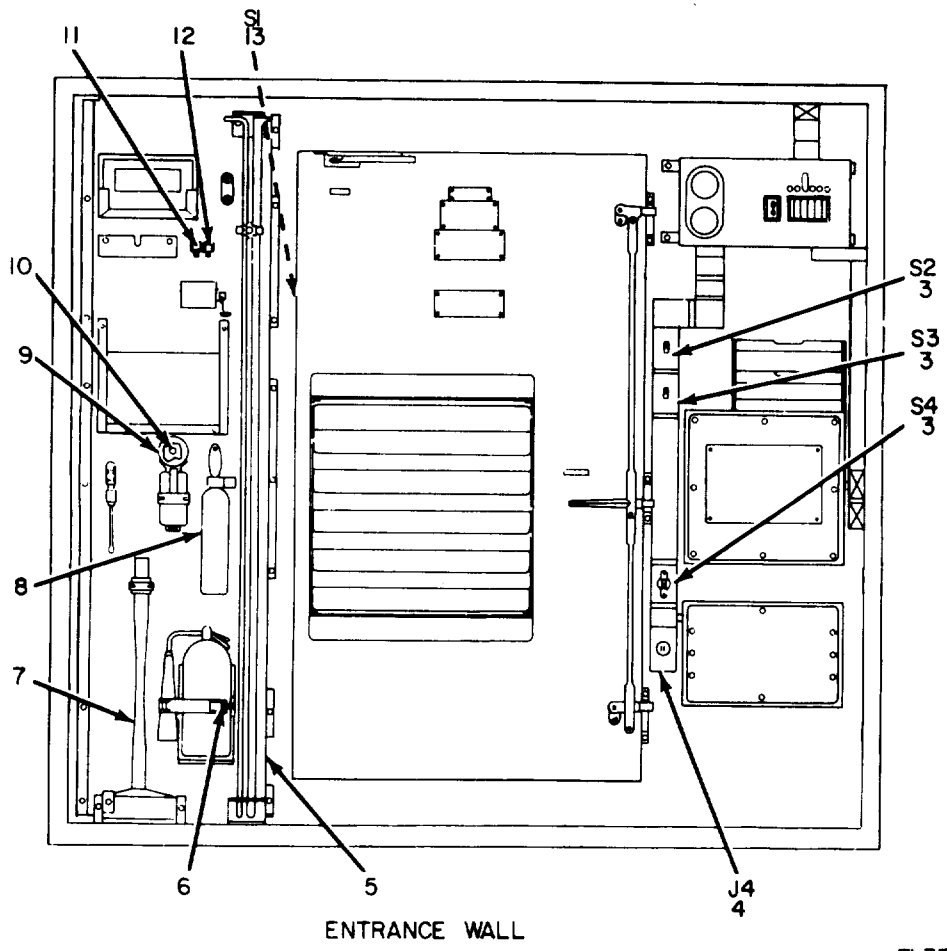
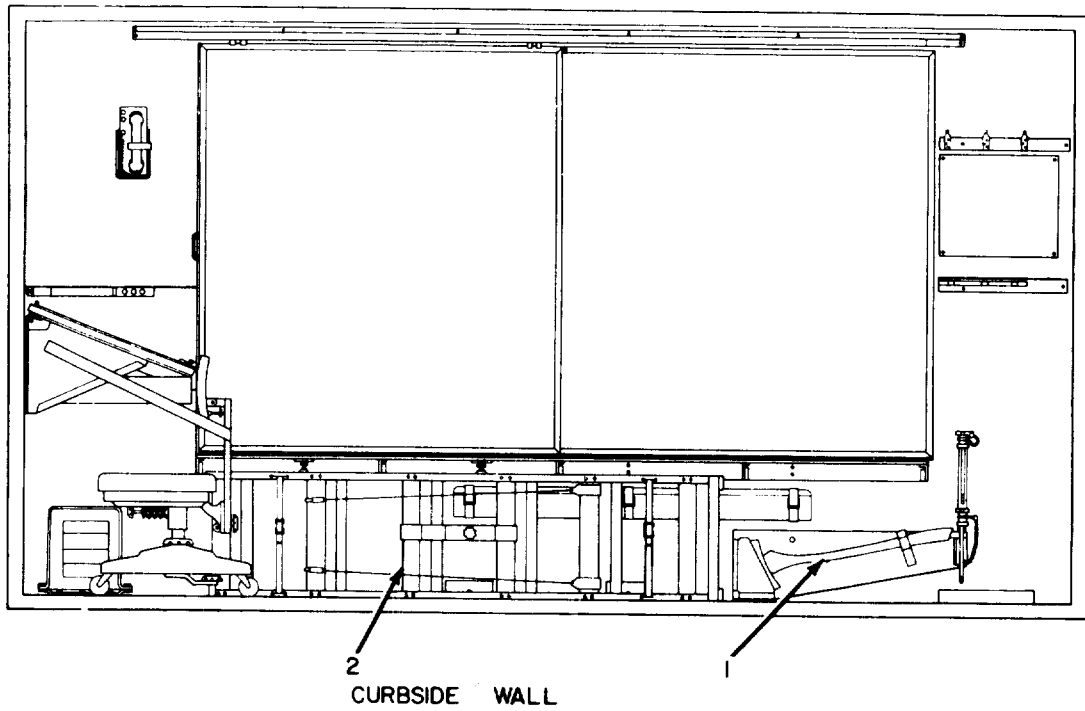


Figure 1. Operation Center Communication AN/MSC-31A.

(1) ILLUSTRATION		(2)	(3)	(4)	(5)	(6)	(7)	(8)
(a) FIG NO.	(b) ITEM NO.	SMR CODE	NATIONAL STOCK NUMBER	PART NUMBER	FSCM	DESCRIPTION	USABLE ON CODE	QTY INC IN UNIT
1	1	PDFHH	5410-00-930-0664	S-37L/MSC-31A	80058	GROUP 00 OPERATION CENTER COMMUNICATION AN/MSC-31A SHELTER,ELEC EQPT		EA 1

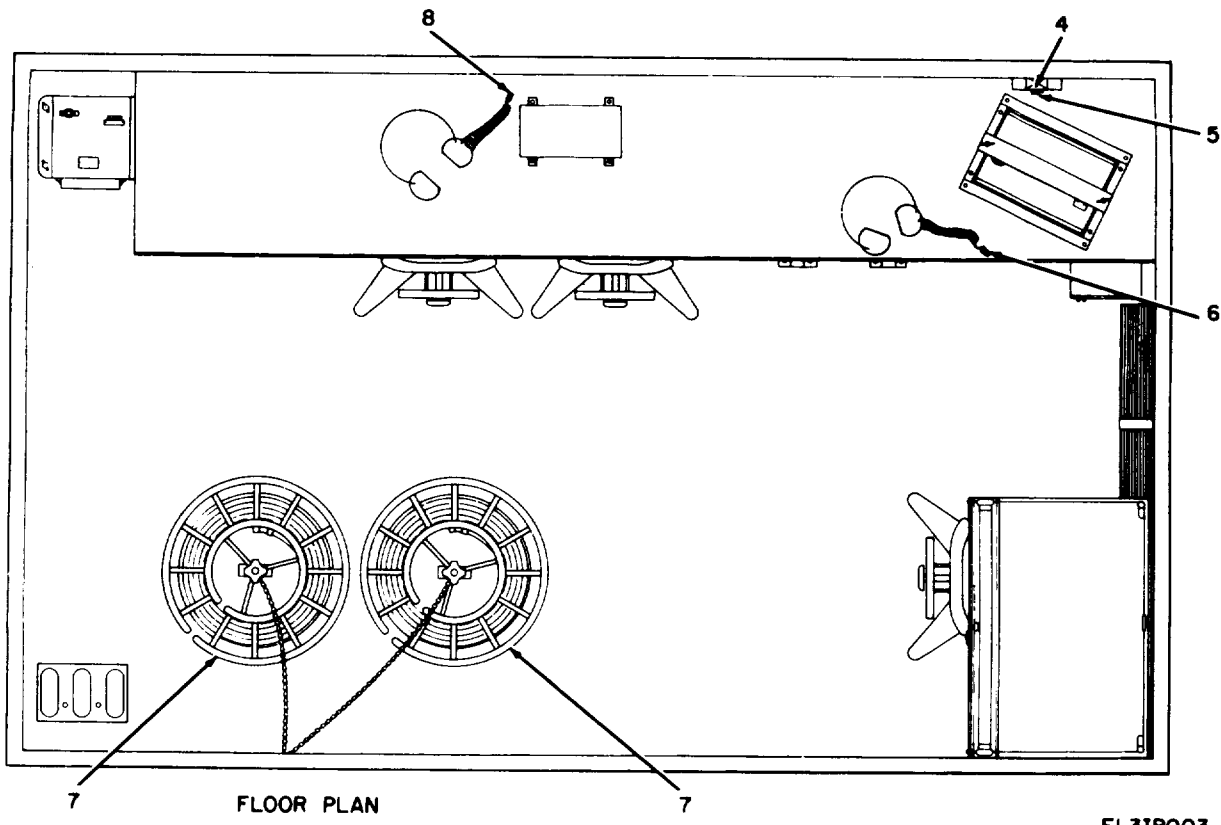
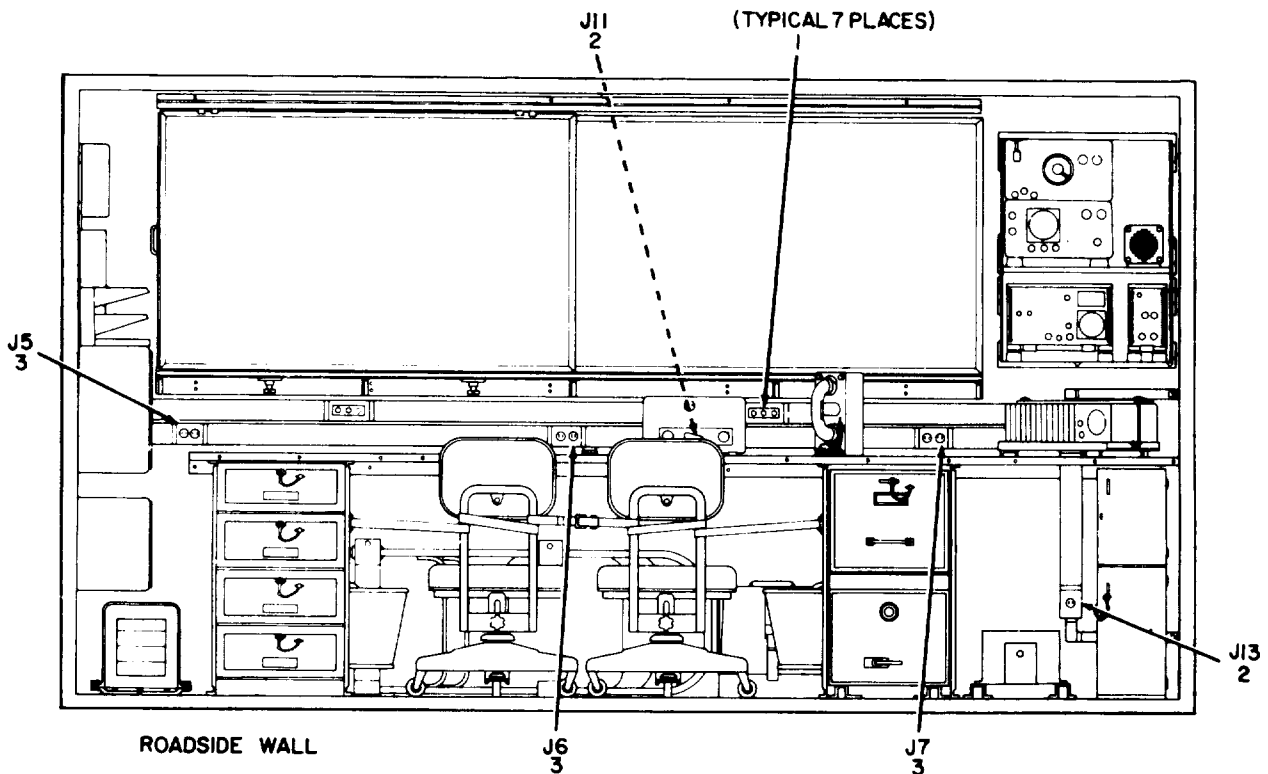


EL31B002

Figure 2. Shelter, Electrical Equipment S-371/MS-31A (Curbside Wall, Entrance Wall).

SECTION II

(1) ILLUSTRATION (a) FIG NO.	(2) (b) ITEM NO.	(3) SMR CODE	(4) NATIONAL STOCK NUMBER	(5) PART NUMBER	(6) FSCM	(7) DESCRIPTION USABLE ON CODE	(8) QTY INC IN UNIT U\M UNIT
GROUP 01 SHELTER, ELECTRICAL EQUIPMENT							
S-371/MSC-31A							
2	1	PAOZZ	5110-00-293-2339	318665-1	06840	AXE	EA 1
2	2	PAOZZ	2540-00-892-6243	MX3391G	80058	LADDER, VEHICLE BDG	EA 1
2	3	PAOZZ	5930-00-865-6101	5521-1	03497	SWITCH, TOGGLE	EA 3
2	4	PAOZZ	5935-00-933-3454	5361	74545	CONNECTOR, RCPT, ELEC	EA 1
2	5	PAOZZ	5975-00-224-5260	MX148G	80058	ROD, GROUND	EA 2
2	6	PAOZZ	4210-00-595-4085	SCC539468	80063	BRACKET	EA 1
2	7	PAOZZ	5120-00-251-4489	CGG-H-86	81348	HAMMER, HAND	EA 1
2	8	PAOZZ	7920-00-178-8315	09502210	94332	BRUSH, DUSTING, BENCH	EA 1
2	9	PAOZZ	6230-00-729-9614	2106-7	32572	LANTERN, ELECTRIC	EA 1
2	10	PAOZZ	6240-00-155-7786	PR2	08108	LANP, INCANDESCENT	EA 1
2	11	PAOZZ	5120-00-293-2696	7113	95344	EXTRACTOR, TUBE	EA 1
2	12	PAOZZ	5120-00-293-2692	024-0129-00	13499	EXTRACTOR, TUBE	EA 1
2	13	PAOZZ	5930-00-837-3665	BZ-2RQ-181-P4	91929	SWITCH, SENSITIVE	EA 1

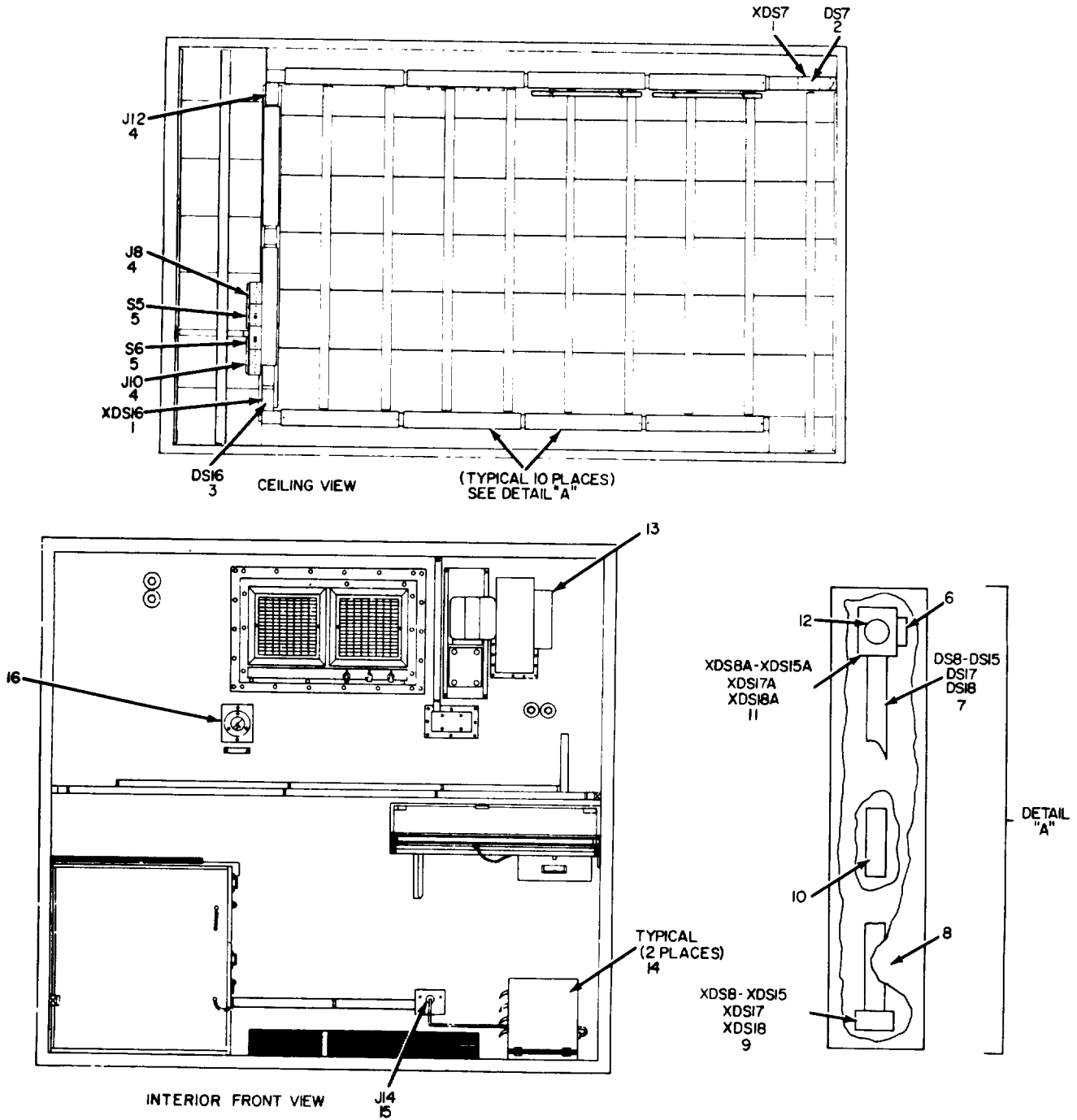


EL31B003

Figure 3. Shelter, Electrical Equipment S-371/MSC-31A (Road Side Wall, Floor Plan).

SECTION II

(1)	(2)	(3)	(4)	(5)	(6)	(7)	(8)	
ILLUSTRATION								
(a)	(b)	NATIONAL			DESCRIPTION		QTY	
FIG	ITEM	STOCK	PART				INC	
NO.	NO.	NUMBER	NUMBER	FSCM		USABLE ON CODE	IN	
							U\M	
							UNIT	
3	1	PAOZZ	5935-00-683-2746	JM01	37338	JACK, TELEPHONE	EA	7
3	2	PAOZZ	5935-00-350-1834	5261	74545	CONNECTOR, RCPT, ELEC	EA	2
3	3	PAOZZ	5935-00-283-4003	276-1275P1	49956	CONNECTOR, RCPT, ELEC	EA	3
3	4	PAOZZ	5935-00-792-3954	MS3102A-28-12S	96906	CONNECTOR, RCPT, ELEC	EA	1
3	5	PAOZZ	5935-00-192-1294	MS3108828-12P	96906	CONNECTOR, PLUG, ELEC	EA	1
3	6	PAOZZ	5935-00-283-2884	U78U	80058	CONNECTOR, PLUG, ELEC	EA	1
3	7	PAOZZ	8130-00-656-1090	RC-435/U	80058	REEL, CABLE	EA	2
3	8	PAOFF	5935-00-283-2950	U77U	80058	CONNECTOR, PLUG, ELEC	EA	1

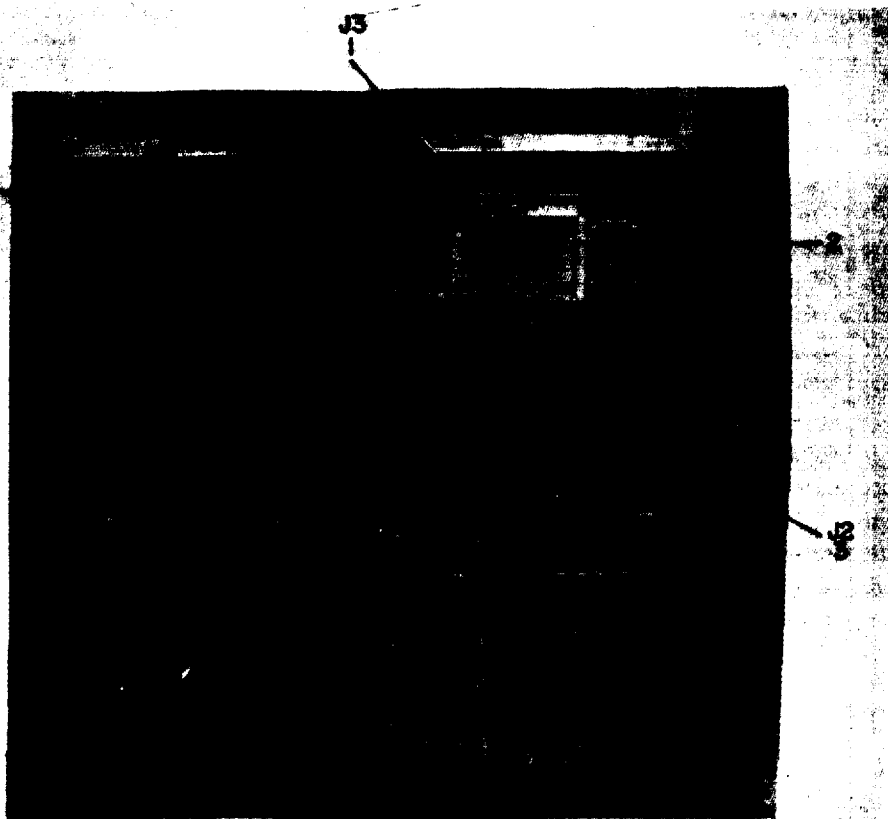


EL318004

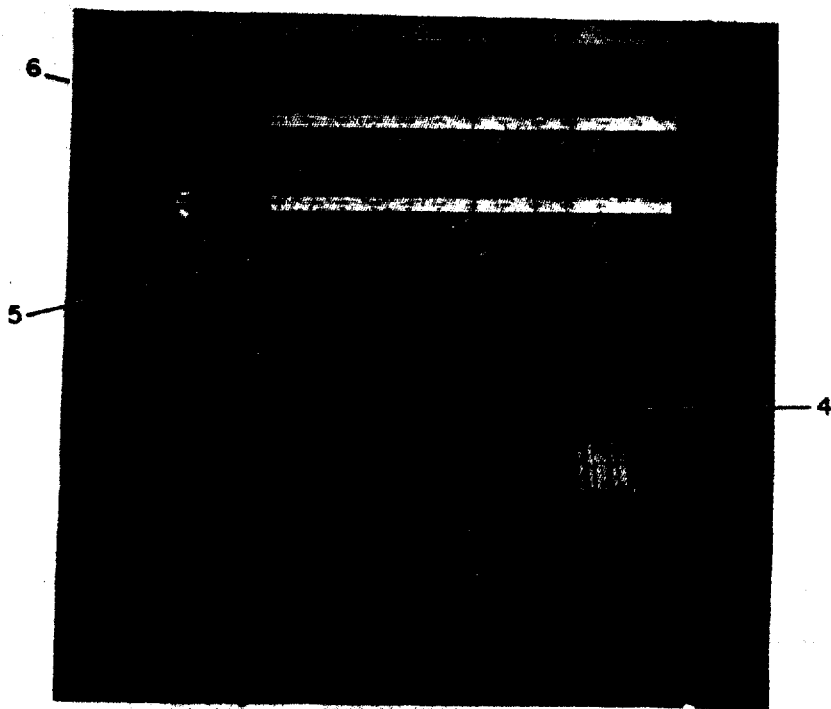
Figure 4. Shelter, Electrical Equipment S-371/MSC-31A, (Ceiling and Interior Front Views).

SECTION II

(1)	(2)	(3)	(4)	(5)	(6)	(7)	(8)	
ILLUSTRATION								
(a)	(b)	NATIONAL			DESCRIPTION		QTY	
FIG	ITEM	STOCK	PART	FSCM		USABLE ON CODE	INC	
NO.	NO.	NUMBER	NUMBER				IN	
							UNIT	
4	1	PAOZZ	6250-00-299-6562	4109	74545	LAMPHOLDER	EA	2
4	2	PAOZZ	6240-00-635-9753	NE34	08108	LAMP,GLOW	EA	1
4	3	PAOZZ	6240-00-143-3070	50ARS120V	08108	LAMP, INCANDESCENT	EA	1
4	4	PAOZZ	5935-00-350-1834	5261	74545	CONNECTOR, RCPT, ELEC	EA	3
4	5	PAOZZ	5930-00-827-0034	1201	74545	SWICH, TOGGLE	EA	2
4	6	PAOZZ	5910-00-553-6096	SCC33033-4	80063	CAPACITOR, FXD, PAPER	EA	10
4	7	PAOZZ	6240-00-538-8447	F20T12N	06455	LAMP, FLUORESCENT	EA	10
4	8	PAOZZ	6210-00-754-8134	SMC349983	80063	SHIELD, LIGHT	EA	10
4	9	PAOZZ	6250-00-299-6093	2319	13445	LAMPHOLDER	EA	10
4	10	PAOZZ	6250-00-804-3449	89G457	08595	BALLAST, LAMP	EA	10
4	11	PAOZZ	6250-00-174-4684	4307W	71183	LAMPHOLDER	EA	10
4	12	PAOZZ	6250-00-299-2884	FS-2	71183	STARTER, FLUORESCENT	EA	10
4	13	XDOOO		SCD539899	80063	BLOWER, EXHAUST	EA	1
4	14	PAOOO	4520-00-224-7909	SCD539901	80063	HEATER	EA	2
4	15	PAOZZ	5935-00-933-3454	5361	74545	CONNECTOR, RCPT, ELEC	EA	1
4	16	PAOFF	6645-00-410-2395	SCC539475	80063	CLOCK, AIRCRAFT, MECH	EA	1



POWER ENTRANCE BOX



SIGNAL ENTRANCE BOX

EL3IB006

Figure 5. Shelter, Electrical Equipment S-371/MS-31A
(Power Entrance Box, Signal Entrance Box).

SECTION II

(1)	(2)	(3)	(4)	(5)	(6)	(7)	(8)
ILLUSTRATION							
(a)	(b)		NATIONAL		DESCRIPTION		QTY
FIG	ITEM	SMR	STOCK	PART			INC
NO.	NO.	CODE	NUMBER	NUMBER	FSCM	USABLE ON CODE	IN
							UNIT
5	1	PAOZZ	5935-00-283-4003	SMC603356	80063	CONNECTOR,RCPT,ELEC	EA 1
5	2	PAOZZ	5975-00-947-3068	M3780FS	21873	COVER,ELECTRICAL	EA 1
5	3	PAOZZ	5935-00-064-5732	D10099	04926	CONNECTOR,RCPT,ELEC	EA 2
5	4	PAFFF	5935-00-045-9832	U187AG	80058	CONNECTOR,RCPT,ELEC	EA 1
5	5	PAOZZ	5999-00-283-5393	315K433	01537	CAP,ELECTRICAL	EA 52
5	6	PAOZZ	5940-00-283-5386	U106U	80058	POST,BINDING	EA 52

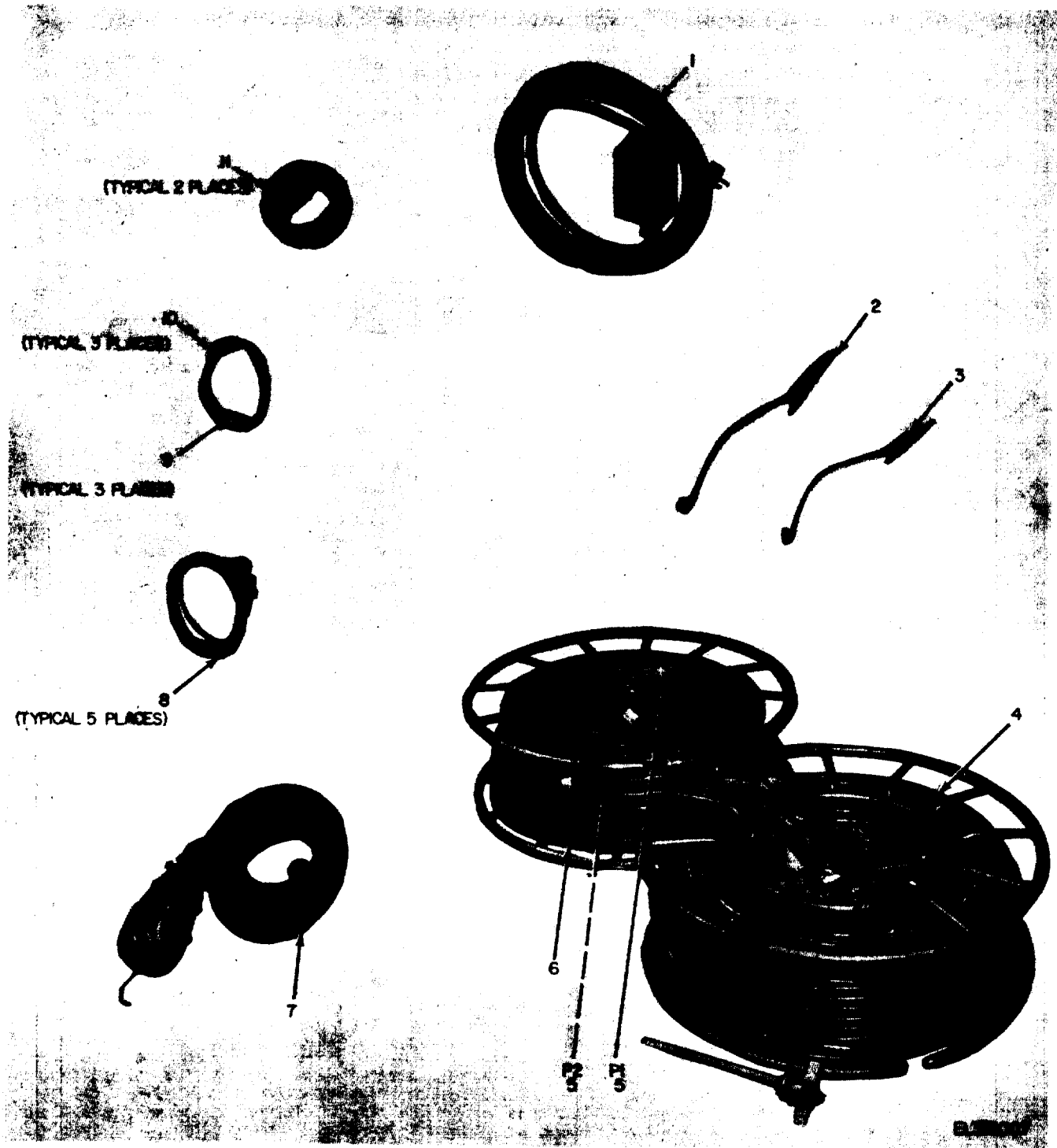


Figure 6. Shelter, Electrical Equipment S-371/MSC-31A, Power Distribution Panel.

SECTION II

(1)	(2)	(3)	(4)	(5)	(6)	(7)	(8)	
ILLUSTRATION								
(a)	(b)	NATIONAL			DESCRIPTION		QTY	
FIG	ITEM	STOCK	PART			USABLE ON CODE	INC	
NO.	NO.	NUMBER	NUMBER	FSCM			IN	
							UNIT	
6	1	PAOZZ	6210-00-087-4248	37-0408-0331-245	72619	LAMPHOLDER	EA	7
6	2	PAOZZ	6240-00-223-9100	MS15098-10-001	81349	LAMP, GLOW	EA	7
6	3	PAOZZ	5925-00-583-7941	20363	73168	CIRCUIT BREAKER	EA	3
6	4	XDOZZ		20A-20ADUAL	90211	CIRCUIT BREAKER	EA	2
6	5	PAOZZ	5925-00-818-4811	Q0115	90211	CIRCUIT BREAKER	EA	2
6	6	PAOZZ	5925-00-785-9531	Q0260	90211	CIRCUIT BREAKER	EA	1
6	7	PAOZZ	6625-00-883-4272	MR36W150ACVVR	81349	VOLTMETER	EA	1
6	8	PAOZZ	5950-00-705-9105	3CT35B	93993	TRANSFORMER, CURRENT	EA	1
6	9	PAOZZ	6629-00-892-5315	MILM10304	81349	AMMETER	EA	1

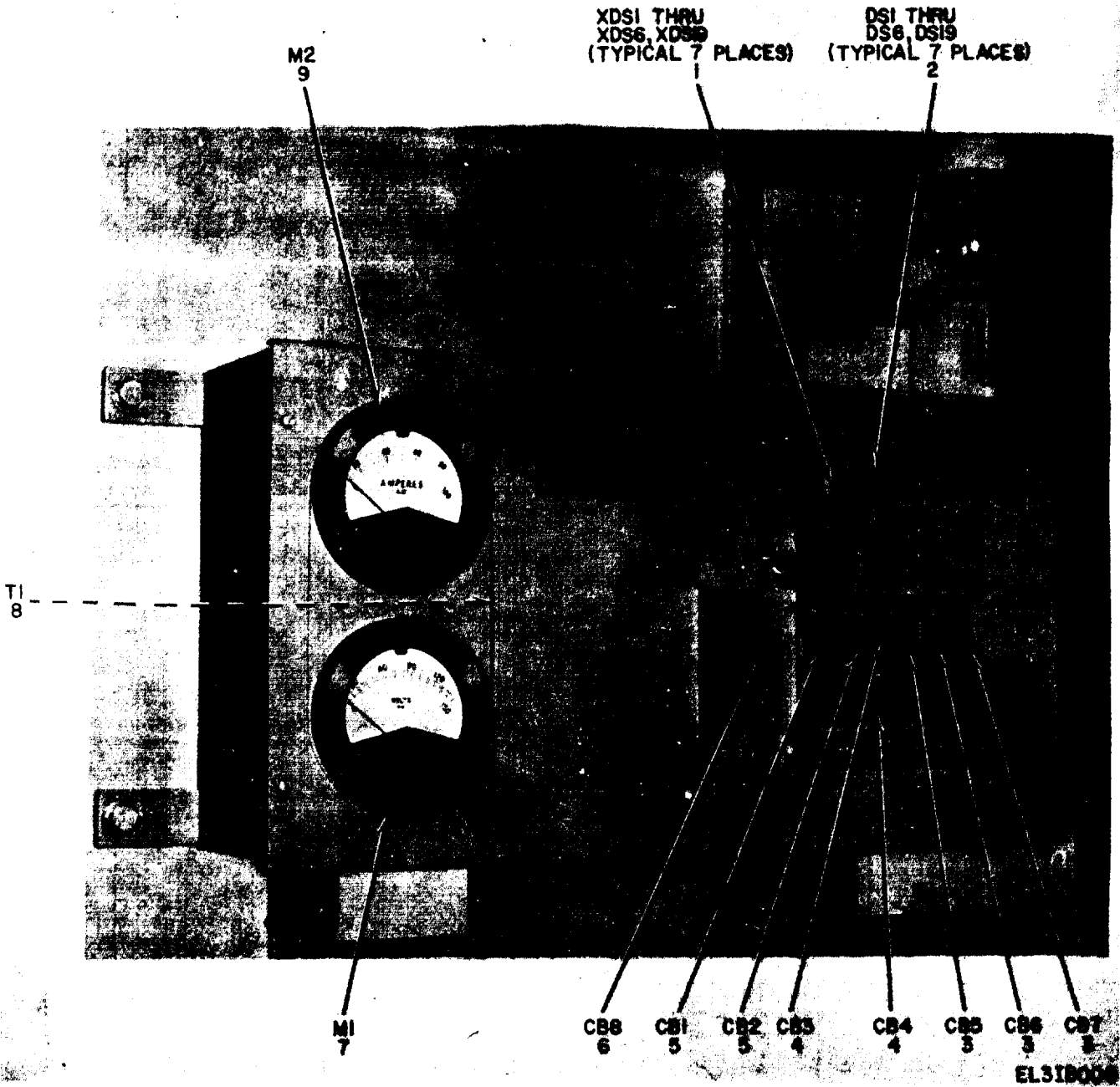
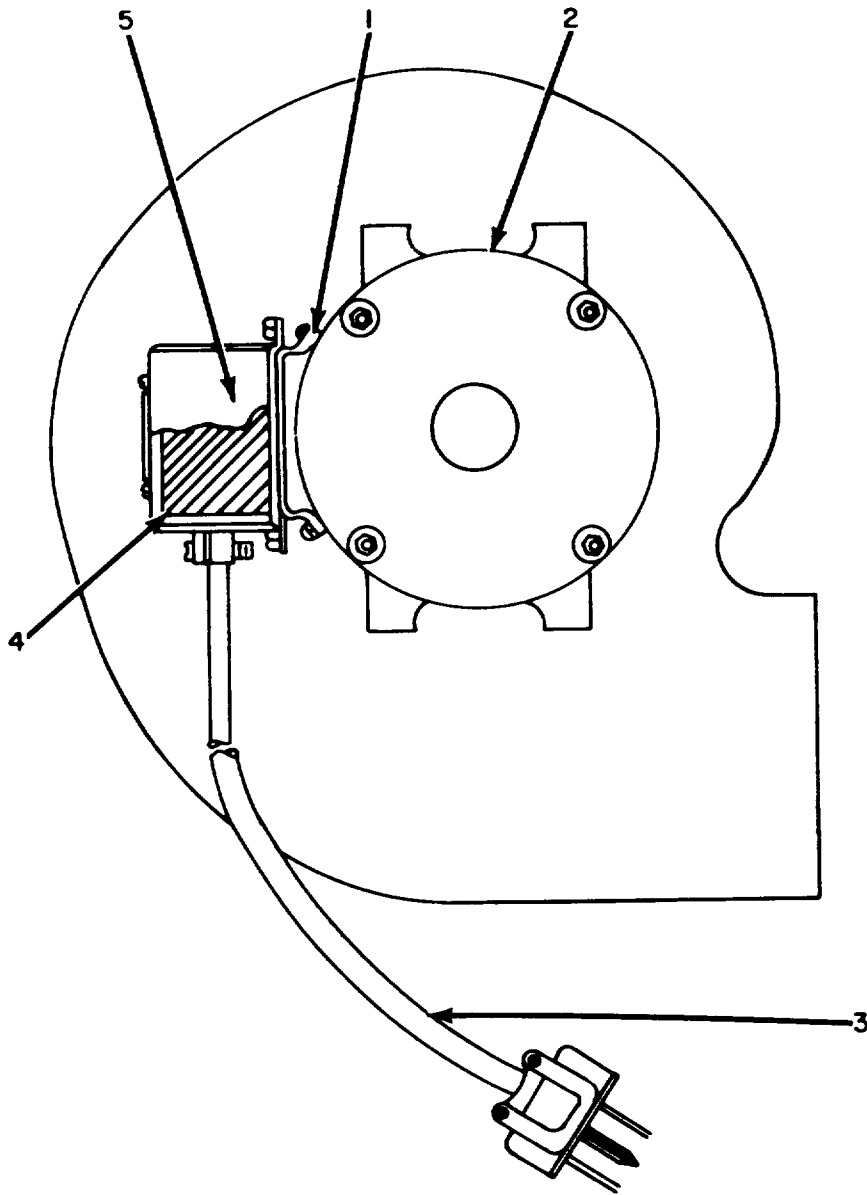


Figure 7. Shelter, Electrical Equipment S-371/ISC-31A, Cable Assemblies.

SECTION II

(1)	(2)	(3)	(4)	(5)	(6)	(7)	(8)	
ILLUSTRATION								
(a)	(b)	NATIONAL			DESCRIPTION		QTY	
FIG	ITEM	STOCK	PART				INC	
NO.	NO.	NUMBER	NUMBER	FSCM		USABLE ON CODE	IN	
							U\M	
							UNIT	
7	1	PAOFF	4940-00-752-2474	SMD350987	80063	CABLE ASSY, POWER	EA	1
7	2	PAOZZ	5120-00-776-9917	EQA6-8P	95344	GRIP, CABLE, JAW	EA	13
7	3	PAOZZ	5120-00-776-9918	EQA26S	95344	GRIP, CABLE, JAW	EA	12
7	4	PAOZZ	5995-00-985-7568	CX-4566A/U	80058	CABLE ASSEMBLY, TEL	EA	1
7	5	PAOZZ	5935-00-134-5266	U-237/BG	80058	CONNECTOR, PLUG, ELEC	EA	2
7	6	PAOFF	5995-00-926-7831	CX7453AU100FT	80058	CABLE ASSY, POWER	EA	1
7	7	PAOZZ	6230-00-239-3518	RE7S2	03743	LIGHT, EXTENSION	EA	1
7	8	PAOZZ	5995-00-752-2566	SMD383873-GP3	80063	CABLE ASSEMBLY, TEL	EA	5
7	9	PAHHH	5935-00-045-9830	U185BU	80058	CONNECTOR, PLUG, ELEC	EA	3
7	10	PAOZZ	5995-00-823-3016	SMD384145	80063	TELEPHONE CORD ASSY	EA	3
7	11	PAOZZ	5410-00-752-2525	666147692	12436	LEAD, ELECTRICAL	EA	2



EL31B008

Figure 8. Blower, Exhaust.

(1) ILLUSTRATION		(2)	(3)	(4)	(5)	(6) DESCRIPTION	(7)	(8)
(a) FIG NO	(b) ITEM NO	SMR CODE	NATIONAL STOCK NUMBER	PART NUMBER	FSCM	USABLE ON CODE	U/M	QTY INC IN UNIT
GROUP 0302 BLOWER, EXHAUST								
8	1	XDOZZ		SCD539618	80063	BASE, CAP BOX ASSY	EA	1
8	2	PAOZZ	6105-00-563-5317	SCD539615-1	80063	MOTOR	EA	1
8	3	XDOZZ		SCD539619GR2	80063	CABLE ASSEMBLY	EA	1
8	4	PAOZZ	5910-00-145-9426	P52582	56289	CAPACITOR	EA	1
8	5	XDOZZ		SCD539617	80063	COVER, CAPACITOR BOX	EA	1

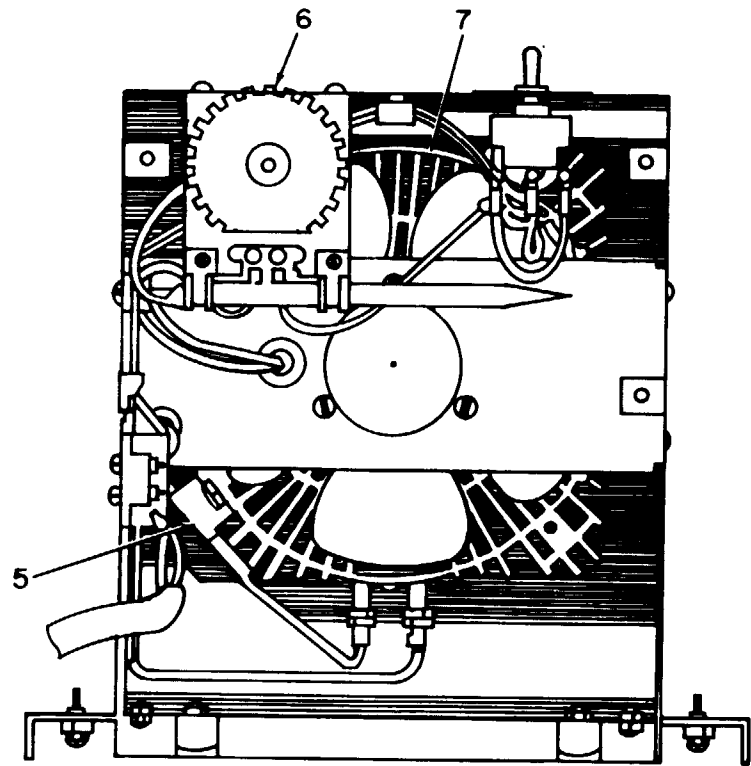
)

)

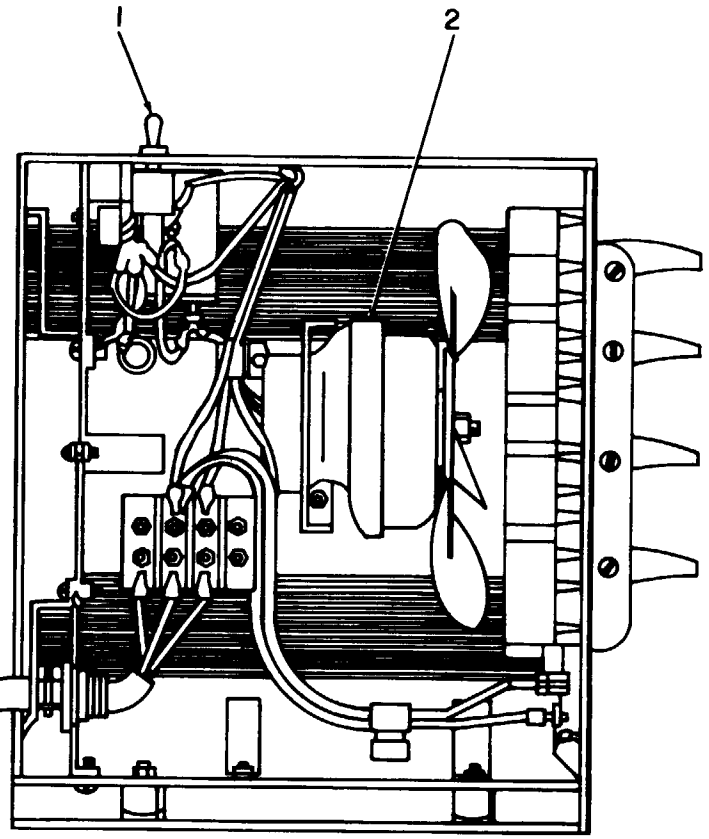
)

)

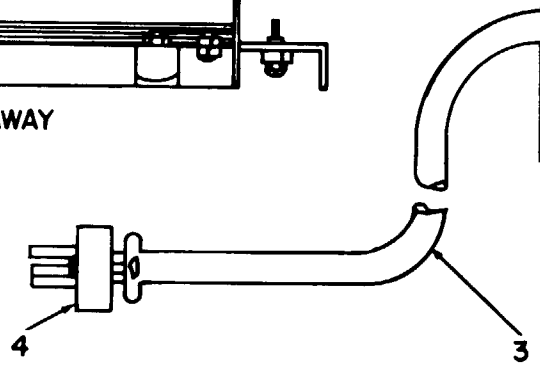
)



REAR CUT-AWAY



LEFT SIDE CUT-AWAY



EL31B009

Figure 9. Heater.

SECTION II

(1)	(2)	(3)	(4)	(5)	(6)	(7)	(8)
ILLUSTRATION							
(a)	(b)		NATIONAL		DESCRIPTION		QTY
FIG	ITEM	SMR	STOCK	PART		USABLE ON CODE	INC
NO.	NO.	CODE	NUMBER	NUMBER	FSCM		IN
							U\M
							UNIT
GROUP 0103 HEATER							
9	1	PAOZZ	5930-00-702-6431	MS25307-212	96906	SWITCH, TOGGLE	EA 1
9	2	XDOZZ		SCC539650	80063	MOTOR	EA 1
9	3	XDOZZ		SCD539906	80063	CABLE ASSEMBLY	EA 1
9	4	PAOZZ	5935-00-931-7490	UP221M	81349	CONNECTOR, PLUT, ELEC	EA 1
9	5	XDOZZ		SCD539903	80063	THERMOSTAT	EA 1
9	6	XDOZZ		SCD539652	80063	THERMOSTAT	EA 1
9	7	XDOZZ		SCD539902	80063	HEATER ELEMENT	EA 1

NATIONAL STOCK NUMBER AND PART NUMBER INDEX

NOTE: LATEST NATIONAL STOCK NUMBER AND PART NUMBER ASSIGNMENTS ARE INCLUDED AT END OF INDEX

STOCK NUMBER	FIGURE NO.	ITEM NO.	STOCK NUMBER	FIGURE NO.	ITEM NO.
5935-00-045-9830	7	9	6240-00-538-8447	4	7
5935-00-045-9832	5	4	4210-00-595-4085	2	6
5935-00-064-5732	5	3	5930-00-702-6431	9	1
6210-00-087-4248	6	1	6230-00-729-9614	2	9
6240-00-143-3070	4	3	4940-00-752-2474	7	1
6240-00-155-7786	2	10	5410-00-752-2525	7	11
5935-00-192-1294	3	5	5995-00-752-2566	7	8
5975-00-224-5260	2	5	6210-00-754-8134	4	8
5120-00-251-4489	2	7	5120-00-776-9917	7	2
5935-00-283-2884	3	6	5120-00-776-9918	7	3
5935-00-283-2950	3	8	5925-00-785-9531	6	6
5935-00-283-4003	3	3	5935-00-792-3954	3	4
5935-00-283-4003	5	1	6250-00-804-3449	4	10
5110-00-293-2339	2	1	5925-00-818-4811	6	5
5120-00-293-2696	2	11	5995-00-823-3016	7	10
6250-00-299-2884	4	12	5930-00-827-0034	4	5
6250-00-299-6562	4	1	2540-00-892-6243	2	2
5935-00-350-1834	4	4	5975-00-947-3068	5	2

PART NUMBER	FSCM	FIG. NO.	ITEM NO.	PART NUMBER	FSCM	FIG. NO.	ITEM NO.
BZ-2RQ-181-P4	91929	2	13	SCD539899	80063	4	13
CX-4566A/U	80058	7	4	SCD539901	80063	4	14
EQA26S	95344	7	3	SCD539902	80063	9	7
EQA6-8P	95344	7	2	SCD539903	80063	9	5
FS-2	71183	4	12	SCD539906	80063	9	3
F20T12N	06455	4	7	SMC349983	80063	4	8
GCG-H-86	81348	2	7	SMD350987	80063	7	1
MR36W150ACVVR	81349	6	7	SMD383873-GP3	80063	7	8
MS25307-212	96906	9	1	SMD384145	80063	7	10
MS3102A-28-12S	96906	3	4	U-237/	80058	7	5
MS3108B28-12P	96906	3	5	U106U	80058	5	6
MX148G	80058	2	5	U185BU	80058	7	9
NE34	08108	4	2	U187AG	80058	5	4
				U77U	80058	3	8
PR2	08108	2	10	U78U	80058	3	6
Q0115	90211	6	5	UP221M	81349	9	4
Q0260	90211	6	6	1201	74545	4	5
RC-435/U	80058	3	7	20A-20ADUAL	90211	6	4
S-371/MSC-31A	80058	1	1	2106-7	32572	2	9
SCC33033-4	80063	4	6	3CT35B	93993	6	8
SCC539468	80063	2	6	37-0408-0331-245	72619	6	1
SCC539475	80063	4	16	4109	74545	4	1
SCC539650	80063	9	2	50ARS120V	08108	4	3
SCD539615	80063	8	2	5261	74545	4	4
SCD539617	80063	8	5	5361	74545	2	4
SCD539618	80063	8	1	5361	74545	4	15
SCD539619GR2	80063	8	3	5521-1	03497	2	3
SCD539652	80063	9	6	7113	95344	2	11
				89G457	08595	4	10

LATEST NATIONAL STOCK NUMBER ASSIGNMENTS

STOCK NUMBER	FIGURE NO.	ITEM NO.	STOCK NUMBER	FIGURE NO.	ITEM NO.
6250-00-174-4684	4	11	8130-00-656-1090	3	7
7920-00-178-8315	2	8	5935-00-683-2746	3	1
6230-00-239-3518	7	7	5950-00-705-9105	6	8
5940-00-283-5386	5	6	5930-00-865-6101	2	3
5999-00-283-5393	5	5	6625-00-883-4272	6	7
5120-00-293-2692	2	12			
6250-00-299-6093	4	9	6629-00-892-5315	6	9
6645-00-410-2395	4	16	5935-00-931-7490	9	4
5925-00-583-7941	6	3			
6240-00-635-9753	4	2			

LATEST PART NUMBER ASSIGNMENTS

PART NUMBER	FSCM	FIG. NO.	ITEM NO.	PART NUMBER	FSCM	FIG. NO.	ITEM NO.
D10099	04926	5	3				
JM01	37338	3	1	20363	73168	6	3
MILM10304	81349	6	9				
MX3391G	80058	2	2	2319	13445	4	9
M3780FS	21873	5	2	276-1275P1	49956	3	3
RE7S2	03743	7	7	315K433	01537	5	5
SMC603356	80063	5	1	318665-1	06840	2	1
024-0129-00	13499	2	12	4307W	71183	4	11
09502210	94332	2	8	666147692	12436	7	11

NOTE: SEE PAGE 23 FOR ADDITIONAL LATEST NATIONAL STOCK NUMBER AND PART NUMBER ASSIGNMENTS

NATIONAL STOCK NUMBER AND PART NUMBER INDEX
 ADDITIONAL LATEST NATIONAL STOCK NUMBER ASSIGNMENTS

STOCK NUMBER	FIGURE NO.	ITEM NO.
5935-00-134-5266	7	5
5910-00-145-9426	8	4
6240-00-223-9100	6	2
4520-00-224-7909	4	14
5935-00-350-1834	3	2
5910-00-553-6096	4	6
6105-00-563-5517	8	2
5930-00-837-3665	2	13
5995-00-926-7831	7	6
5410-00-930-0664	1	1
5935-00-933-3454	2	4
5935-00-933-3454	4	15
5995-00-985-7568	7	4

ADDITIONAL LATEST PART NUMBER ASSIGNMENTS

PART NUMBER	FSCM	FIG. NO.	ITEM NO.
CX7453AU100FT	80058	7	6
MS15098-10-001	81349	6	2
P52582	56289	8	4
SCD539615-1	80063	8	2
U-237/BG	80058	7	5
5261	74545	3	2



SOMETHING WRONG WITH THIS MANUAL?

THEN... JOT DOWN THE DOPE ABOUT IT ON THIS FORM, TEAR IT OUT, FOLD IT AND DROP IT IN THE MAIL!

FROM: (YOUR UNIT'S COMPLETE ADDRESS)

Commander
Stateside Army Depot
ATTN: AMSTA-US
Stateside, N.J. 07703

DATE 10 July 1975

PUBLICATION NUMBER TM 11-5840-340-12	DATE 23 Jan 74	TITLE Radar Set AN/SPG-76
---	-------------------	------------------------------

BE EXACT... PIN-POINT WHERE IT IS				IN THIS SPACE TELL WHAT IS WRONG AND WHAT SHOULD BE DONE ABOUT IT:
PAGE NO.	PARA-GRAPH	FIGURE NO.	TABLE NO.	
2-25	2-28			<p>Recommend that the installation antenna alignment procedure be changed throughout to specify a 2° IFF antenna lag rather than 1°.</p> <p>REASON: Experience has shown that with only a 1° lag, the antenna servo system is too sensitive to wind gusting in excess of 20 knots, and has a tendency to rapidly accelerate and decelerate as it hunts, causing strain to the drive train. Hunting is minimized by adjusting the lag to 2° without degradation of operation.</p>
3-10	3-3		3-1	<p>Item 5, Function column. Change "2 db" to "3db."</p> <p>REASON: The adjustment procedure for the TRANS POWER FAULT indicator calls for a 3 db (500 watts) adjustment to light the TRANS POWER FAULT indicator.</p>
5-6	5-8			<p>Add new step f.1 to read, "Replace cover plate removed in step e.1, above."</p> <p>REASON: To replace the cover plate.</p>
		FO3		<p>Zone C 3. On J1-2, change "+24 VDC to "+5 VDC."</p> <p>REASON: This is the output line of the 5 VDC power supply. + 24 VDC is the input voltage.</p>

TEAR ALONG DOTTED LINE

TYPED NAME, GRADE OR TITLE, AND TELEPHONE NUMBER SSG I. M. DeSpiritof 999-1776	SIGN HERE: <i>SSG I. M. DeSpiritof</i>
---	---



SOMETHING WRONG WITH THIS MANUAL?

THEN... JOT DOWN THE DOPE ABOUT IT ON THIS FORM, TEAR IT OUT, FOLD IT AND DROP IT IN THE MAIL!

FROM: (YOUR UNIT'S COMPLETE ADDRESS)

DATE

PUBLICATION NUMBER

DATE

TITLE

BE EXACT... PIN-POINT WHERE IT IS

IN THIS SPACE TELL WHAT IS WRONG AND WHAT SHOULD BE DONE ABOUT IT:

PAGE NO.	PARA-GRAPH	FIGURE NO.	TABLE NO.
----------	------------	------------	-----------

TEAR ALONG DOTTED LINE

TYPED NAME, GRADE OR TITLE, AND TELEPHONE NUMBER

SIGN HERE:

DA FORM 2028-2 (TEST)
1 AUG 74

P.S.--IF YOUR OUTFIT WANTS TO KNOW ABOUT YOUR MANUAL "FIND," MAKE A CARBON COPY OF THIS AND GIVE IT TO YOUR HEADQUARTERS.

FILL IN YOUR
UNIT'S ADDRESS

FOLD BACK

DEPARTMENT OF THE ARMY

OFFICIAL BUSINESS

Commander
US Army Electronics Command
ATTN: DRSEL-MA-Q
Fort Monmouth, New Jersey 07703

TEAR ALONG DOTTED LINE

FOLD BACK



SOMETHING WRONG WITH THIS MANUAL?

THEN... JOT DOWN THE DOPE ABOUT IT ON THIS FORM, TEAR IT OUT, FOLD IT AND DROP IT IN THE MAIL!

FROM: (YOUR UNIT'S COMPLETE ADDRESS)

DATE

PUBLICATION NUMBER

DATE

TITLE

BE EXACT... PIN-POINT WHERE IT IS

IN THIS SPACE TELL WHAT IS WRONG AND WHAT SHOULD BE DONE ABOUT IT:

PAGE NO.	PARA-GRAPH	FIGURE NO.	TABLE NO.
----------	------------	------------	-----------

TEAR ALONG DOTTED LINE

TYPED NAME, GRADE OR TITLE, AND TELEPHONE NUMBER

SIGN HERE:

FILL IN YOUR
UNIT'S ADDRESS

FOLD BACK

DEPARTMENT OF THE ARMY

OFFICIAL BUSINESS

Commander
US Army Electronics Command
ATTN: DRSEL-MA-Q
Fort Monmouth, New Jersey 07703

FOLD BACK

TEAR ALONG DOTTED LINE



SOMETHING WRONG WITH THIS MANUAL?

THEN... JOT DOWN THE DOPE ABOUT IT ON THIS FORM, TEAR IT OUT, FOLD IT AND DROP IT IN THE MAIL!

FROM: (YOUR UNIT'S COMPLETE ADDRESS)

DATE

PUBLICATION NUMBER

DATE

TITLE

BE EXACT... PIN-POINT WHERE IT IS

IN THIS SPACE TELL WHAT IS WRONG AND WHAT SHOULD BE DONE ABOUT IT:

PAGE NO.	PARA-GRAPH	FIGURE NO.	TABLE NO.

TEAR ALONG DOTTED LINE

TYPED NAME, GRADE OR TITLE, AND TELEPHONE NUMBER

SIGN HERE:

FILL IN YOUR
UNIT'S ADDRESS

FOLD BACK

DEPARTMENT OF THE ARMY

OFFICIAL BUSINESS

Commander
US Army Electronics Command
ATTN: DRSEL-MA-Q
Fort Monmouth, New Jersey 07703

FOLD BACK

TEAR ALONG DOTTED LINE

By Order of the Secretary of the Army:

BERNARD W. ROGERS
General, United States Army
Chief of Staff

Official:

PAUL T. SMITH
Major General, United States Army
The Adjutant General

Distribution:

Active Army:

USASA (2)	LBAD (14)
COE (1)	SAAD (30)
TSG (1)	TOAD (14)
USAARENBD (1)	SHAD (3)
DARCOM (1)	Ft Gillem (10)
TRADOC (2)	Sig FLDMS (1)
OS Maj Cmd (4)	Units org under fol TOE:
TECOM (2)	(1 copy each unit)
USACC (4)	6-17
MDW (1)	6-615
Armies (2)	7
Corps (2)	11-35
HISA (Ft Monmouth) (33)	11-85
Svc Colleges (1)	11-86
USASIGS (5)	11-97
USAADS (2)	11-116
USAFAS (2)	11-117
USAARMS (2)	11-122
USAIS (2)	11-127
USAES (2)	11-247
USAICS (3)	11-302
MAAG (1)	11-347
UARMIS (1)	11-377
USAERDAA (1)	11-500(AA-AC)
USAERDAW (1)	17
Instls (2) except	29-134
Ft Gordon (10)	29-136
Ft Huachuca (10)	31-105
Ft Carson (5)	31-106
Ft Richardson (ECOM Ofc) (2)	37

NG: None

USAR: None

For explanation of abbreviations, used see AR 310-50.



)

)

.

.

)

.

.

)

)

